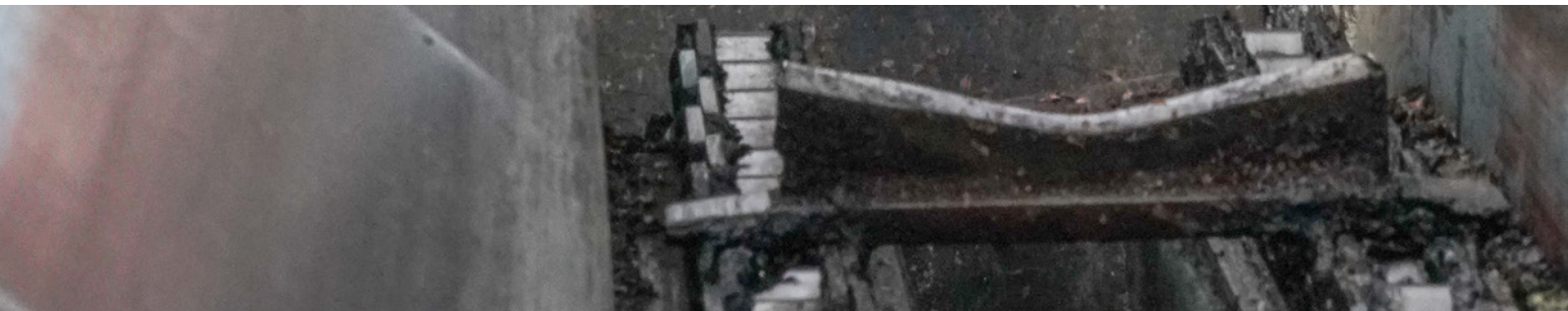




**LUOPAJÄRVEN SAHA OY** 



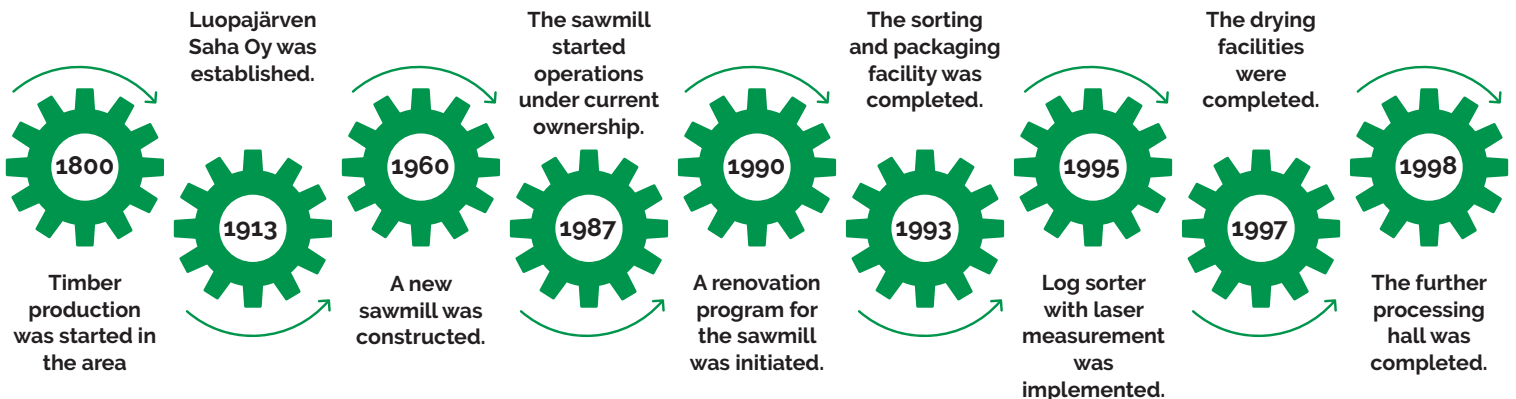
**High-quality  
coniferous timber**



# Responsible timber production

**Luopajarven Saha has been supplying high-quality sawn timber since 1906.** Approximately a quarter of our finished products are sold in the domestic market, while three quarters are exported to countries including Greece, Turkey, Spain, Austria, Denmark, the Baltic states, and Egypt.

Our operations combine experience and tradition with modern methods. We have invested in contemporary equipment such as a Microtec log sorter. Our equipment also includes Stenner band saw, Wacon eight-cutter planer, Friulmac end-matching machine, Samec Products plastic film machine, and an external cladding painting line.



# Our production process

## QUALITY GRADES FOR OUR LUMBER

### PINE

- US
- V
- VI

### SPRUCE

- US
- V
- VI



## TIMBER HARVESTING

Our annual logging volume is approximately 50,000 cubic meters, consisting of 60% pine and 40% spruce. Our forestry department sources and harvests timber, taking into consideration local conditions and nature. The raw materials are not derived from protected areas or disputed sites. The company leadership adheres to traceability requirements for forest-based products and participates in regional forest certification. About 80% of our raw materials are purchased from local forest owners, both through standing and cut-to-order sales, received at the factory by measurement.

## LOG SORTING

All log batches are sorted and inspected by factory measures, which are continuously monitored and approved by the Ministry of Agriculture and Forestry. A new log measuring device, Microtec Logeye 301, was introduced in autumn 2023.

## SAWMILL

From 50,000 cubic meters of high-quality log timber, our frame saw line produces approximately 24,000 cubic meters of sawn timber. The line is equipped with a digital camera system for quality determination during the sawing process.

## SORTING AND PACKAGING

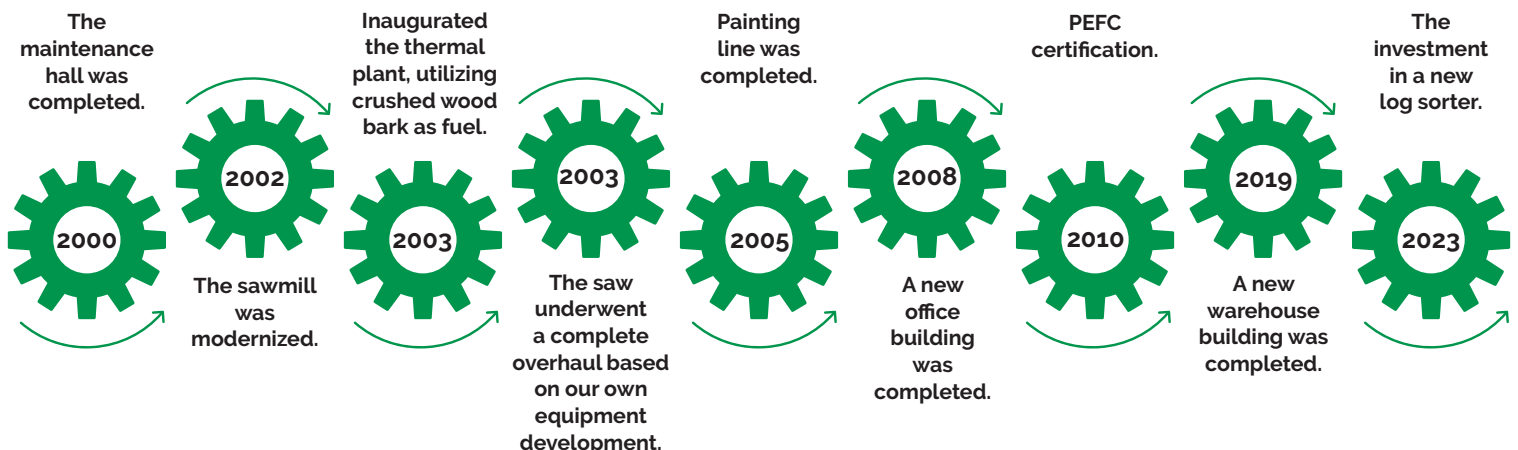
After sawing, the fresh timber is sorted by quality and length in our modern packaging and sorting facility, then stacked for drying. Post-drying, the timber is packaged for sale or further processing.

## TIMBER DRYING

We use four 60 cubic meter chamber dryers from Tekmawood for drying timber. The dryers are heated using by-products from the sawmill, like bark, sawdust, and wood chips.

## FURTHER PROCESSING

Our processing plant operates flexibly to accommodate customer-specific small batches efficiently. We can supply timber cut with band saws, planed, edge-jointed, primed, and plastic film packaged according to customer specifications in size, profile, and quality.





## CONTACT US FOR MORE INFORMATION

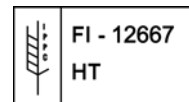
[www.luopajarvensaha.fi](http://www.luopajarvensaha.fi) • [toimisto@luopajarvensaha.fi](mailto:toimisto@luopajarvensaha.fi)



### LUOPAJÄRVEN SAHA OY

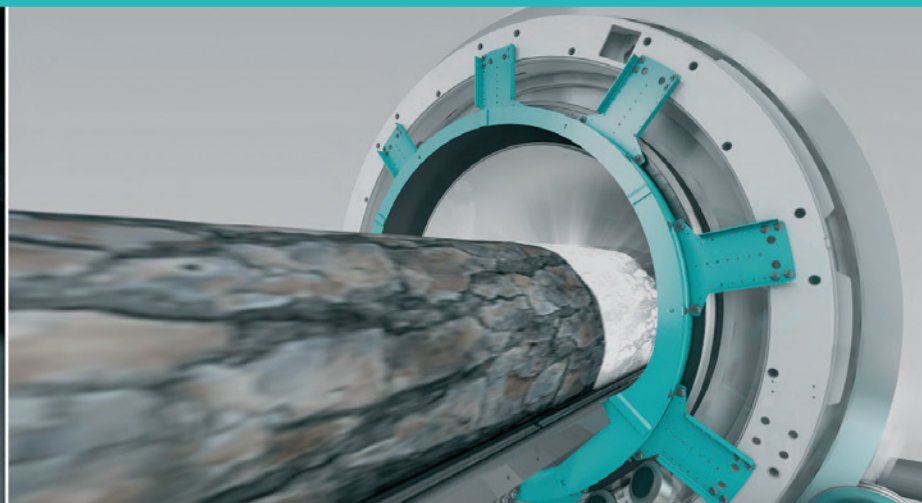
Luopajarventie 700  
FI-61270 Luopajarvi  
Finland  
+358 50 307 6024.

**STRONGEST IN FINLAND PLATINUM**  
Luopajarven Saha Oy  
FI06647833 | 2022-2024



Innovating Wood

MICROTEC



#innovatingwood

microtec.eu